

# Anrikningsverket-Boliden (Markkabel)



Station TT1062  
(Anrikningsverket)

1

2

3

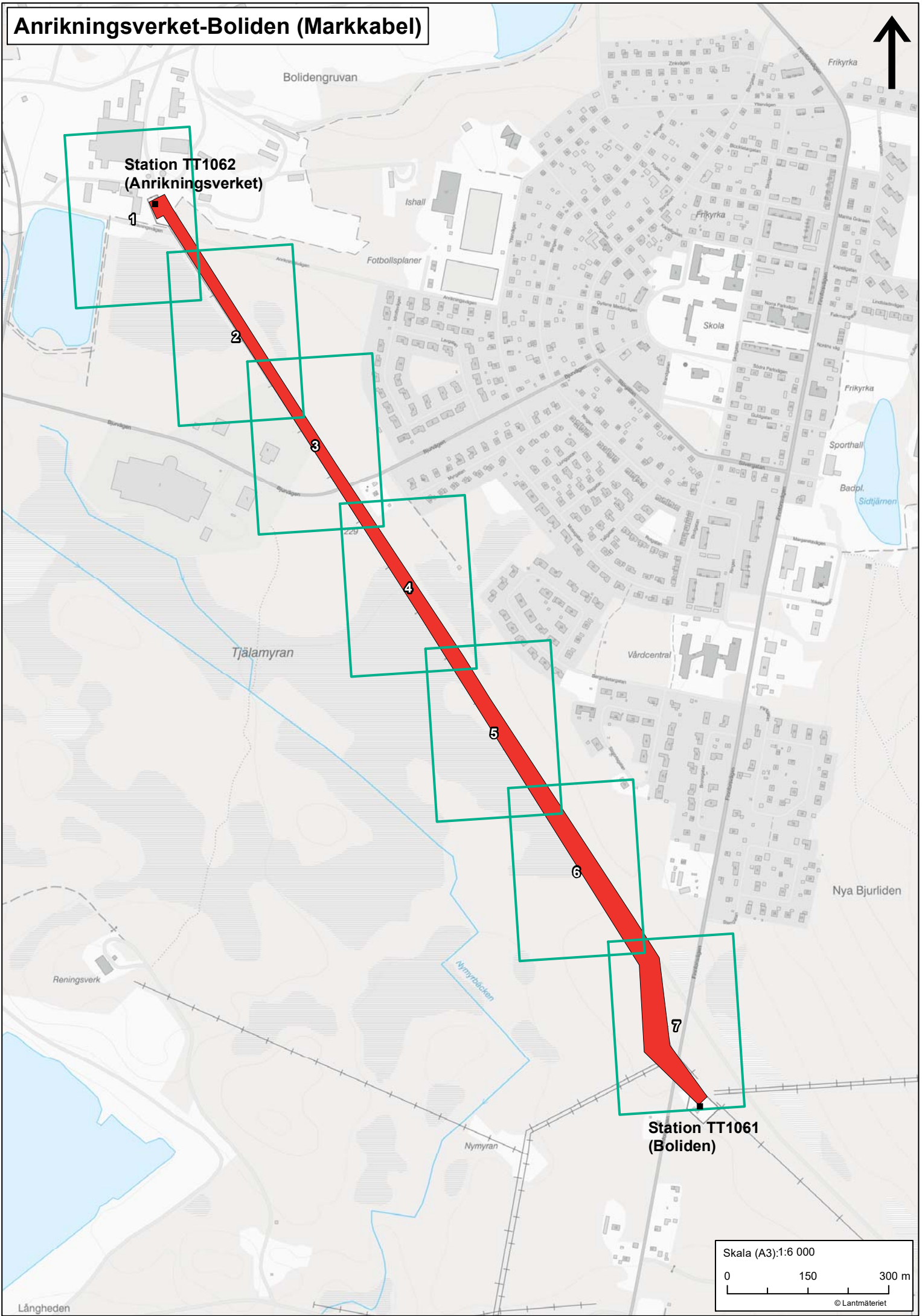
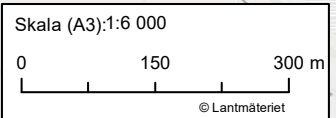
4

5

6

7

Station TT1061  
(Boliden)

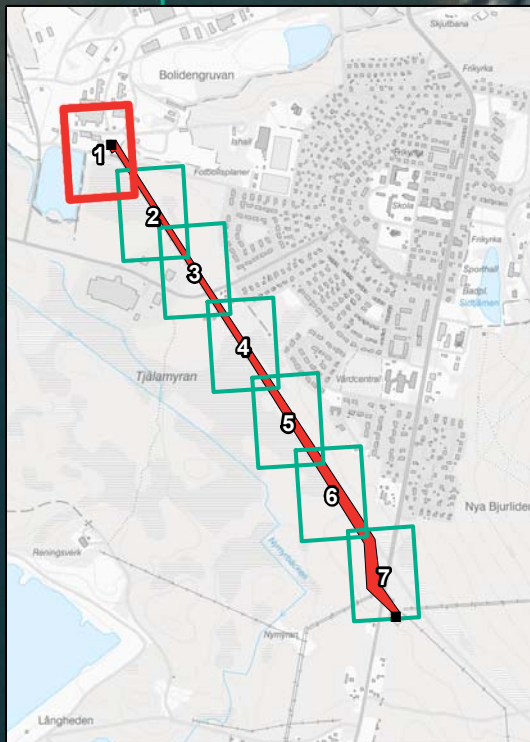




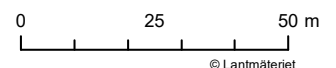
BJURLIDEN 1:637

Anrikningsverket  
(Station TT1062)

BJURLIDEN 1:298



Skala (A3): 1:1 000  
Kartblad 1 av 7

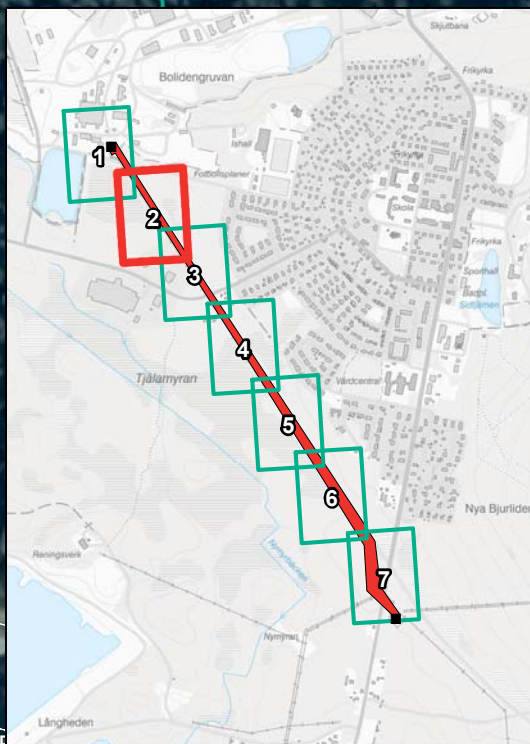


© Lantmäteriet

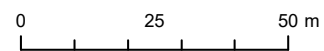


BJURLIDEN 1:298

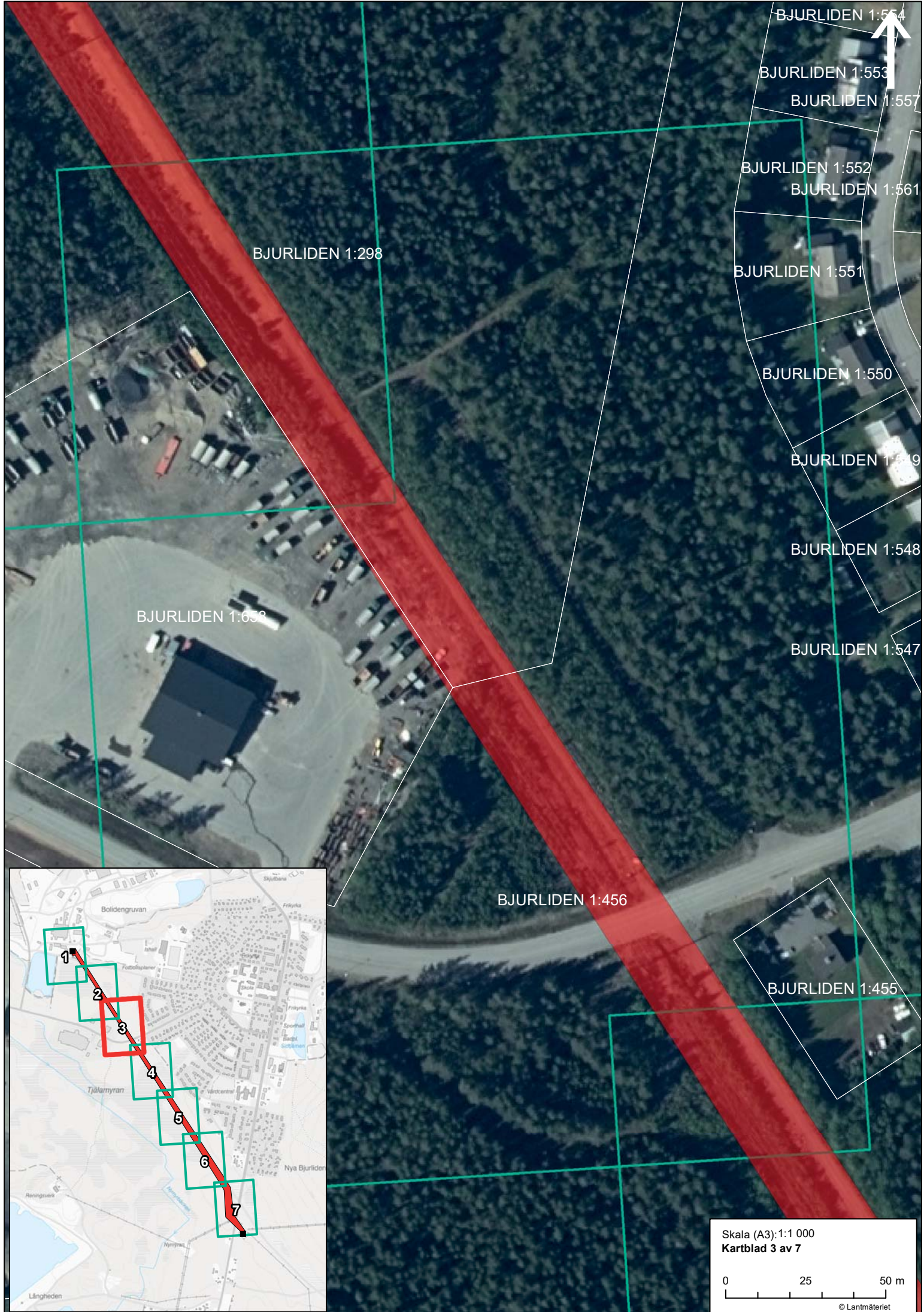
BJURLIDEN 1:658



Skala (A3): 1:1 000  
Kartblad 2 av 7



© Lantmäteriet



BJURLIDEN 1:554

BJURLIDEN 1:553

BJURLIDEN 1:557

BJURLIDEN 1:552

BJURLIDEN 1:561

BJURLIDEN 1:551

BJURLIDEN 1:550

BJURLIDEN 1:549

BJURLIDEN 1:548

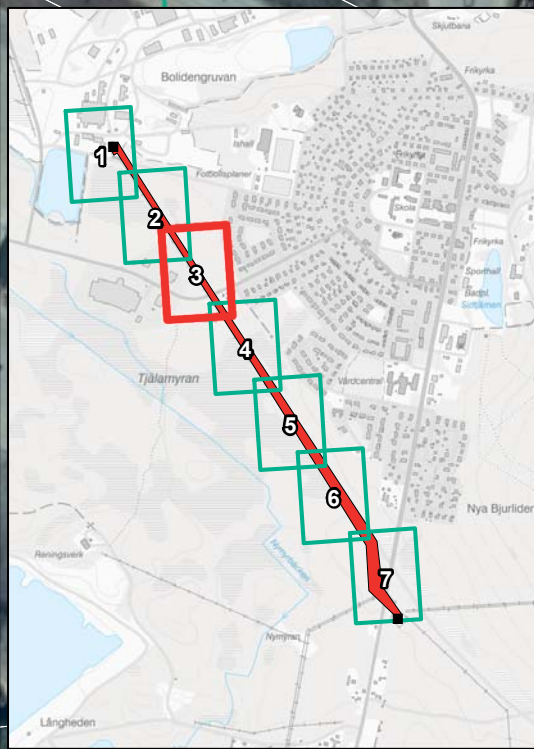
BJURLIDEN 1:547

BJURLIDEN 1:298

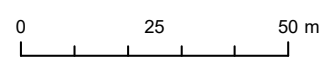
BJURLIDEN 1:638

BJURLIDEN 1:456

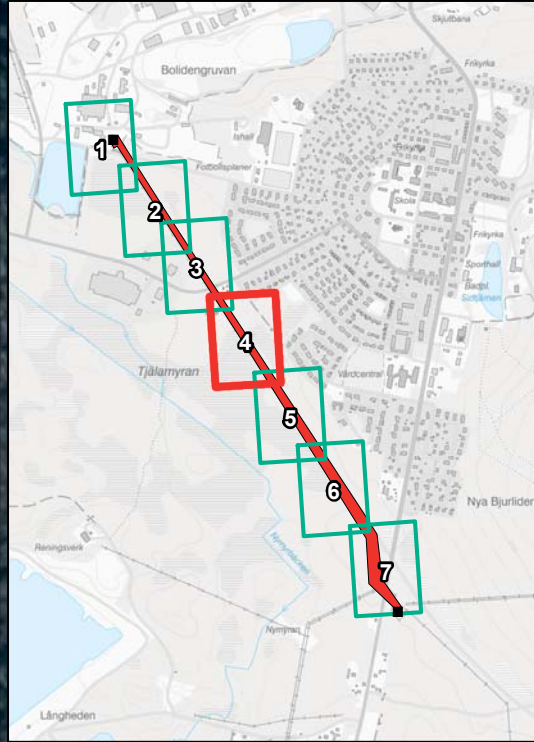
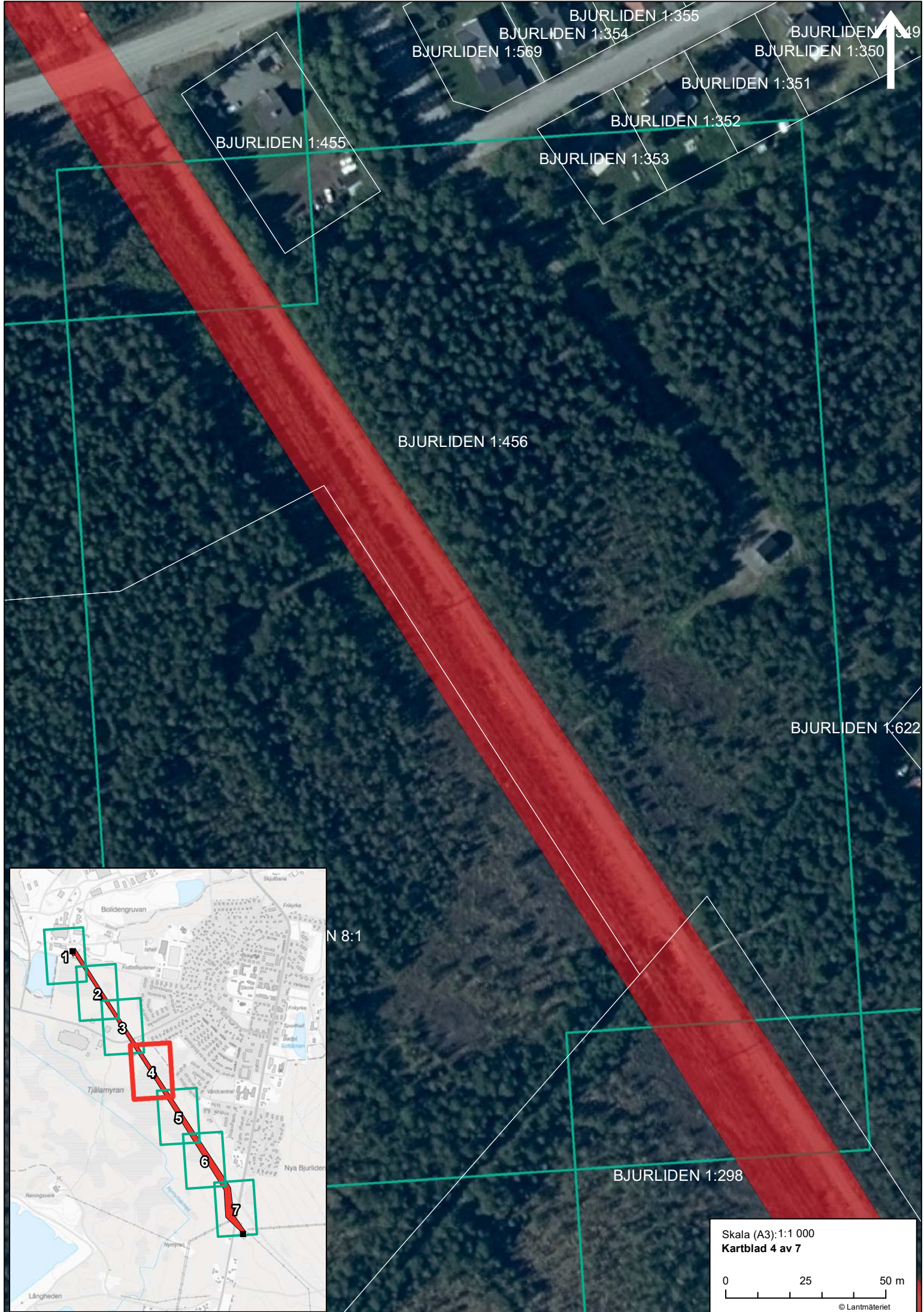
BJURLIDEN 1:455



Skala (A3): 1:1 000  
Kartblad 3 av 7



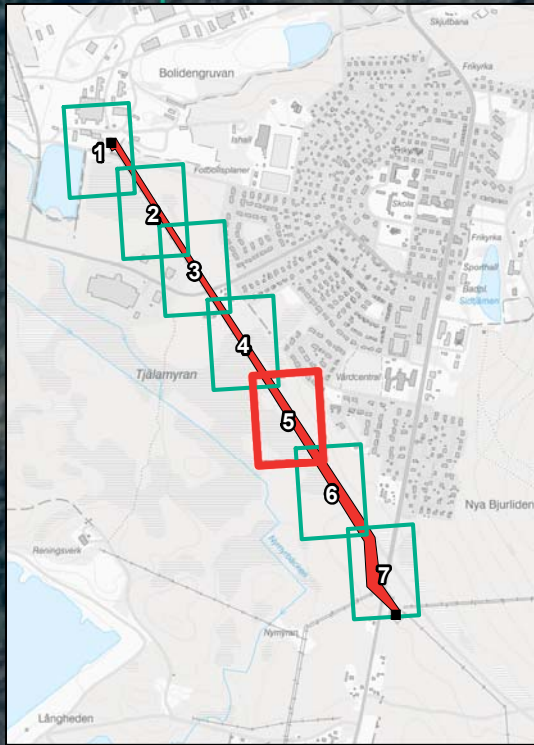
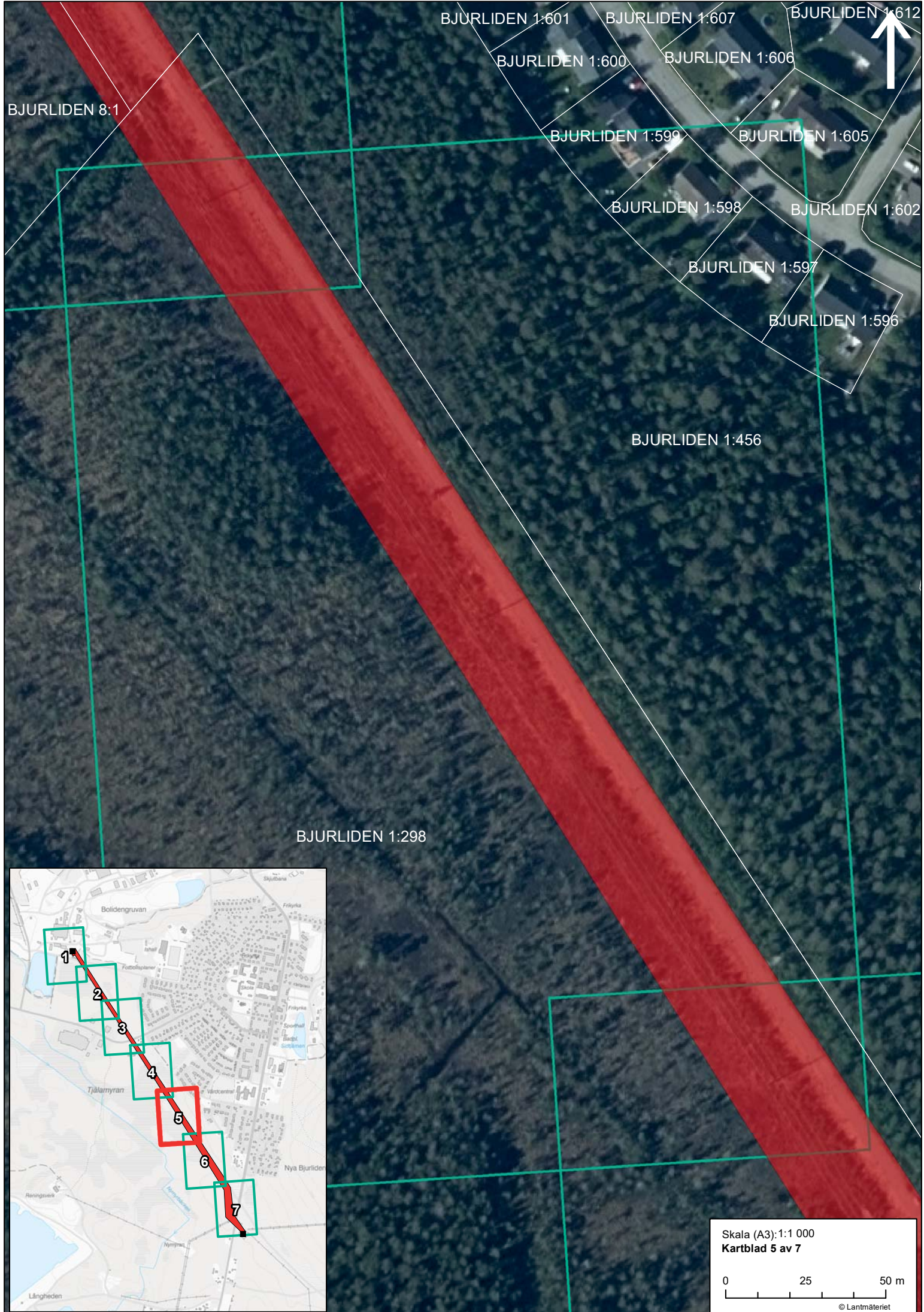
© Lantmäteriet



Skala (A3): 1:1 000  
Kartblad 4 av 7

0 25 50 m

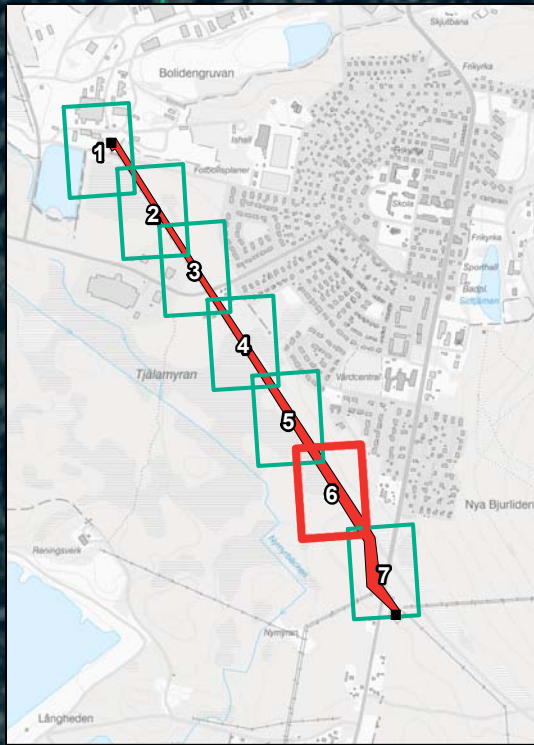
© Lantmäteriet



Skala (A3): 1:1 000  
Kartblad 5 av 7

0 25 50 m

© Lantmäteriet



Skala (A3): 1:1 000  
 Kartblad 6 av 7

0 25 50 m

© Lantmäteriet

BJURLIDEN 1:298

BJURLIDEN 1:504



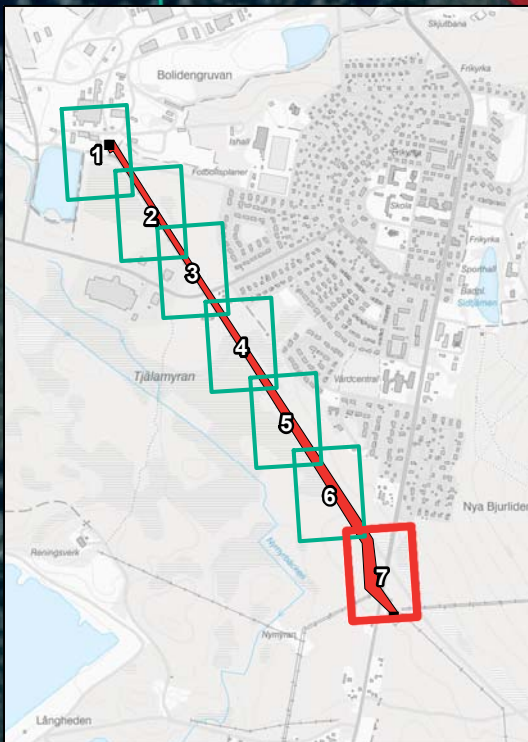
BJURLIDEN 1:456

BJURLIDEN 8:1

BJURLIDEN 1:640

**Boliden  
(station TT1061)**

BJURLIDEN 1:496



N 1:40

BJURLIDEN 1:640

Skala (A3): 1:1 000  
Kartblad 7 av 7

0 25 50 m

© Lantmäteriet